

4-H UPDATE



Midway District 4-H Newsletter

MIDWAY DISTRICT 4-H PROGRAM represents
ELLSWORTH AND RUSSELL AREA 4-H CLUBS

ELLSWORTH OFFICE
210 N. Kansas Ave.
Ellsworth, KS 67439
(785) 472-4442

RUSSELL OFFICE
309 S. Fossil Ave.
Russell, KS 67665
(785) 483-3157

Midway District Staff



Marcia Gier

4-H Youth Development
marciagier@ksu.edu



Clinton Laflin

Livestock
cllaflin@ksu.edu



Jessica Kootz

Family and Consumer Sciences
jessicak@ksu.edu



Craig Dinkel

Crops/Horticulture
cadinkel@ksu.edu



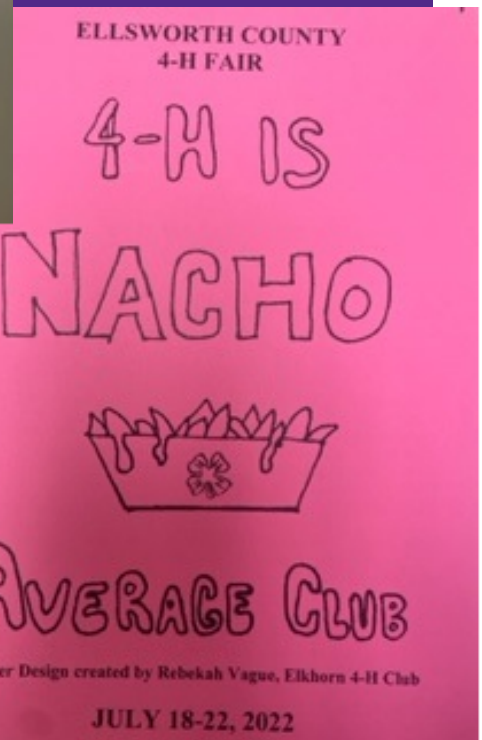
Karrie Van Winkle

Program Assistant
karrievan@ksu.edu



Kari Maul

Office Professional-Ellsworth
kmaul@ksu.edu





Russell Report



2022 RS County 4-H Council Officers

President
Kierra Eck

Vice President
Hope Lumpkins

Secretary
Teagen Pfeifer

Treasurer
Conner Miller

Reporter
Emma Karst

4-H Council Meeting
August 1 at 7:00pm

Be prepared for these
meetings with officer and
committee reports!

Russell Fair Board Meeting
July 11 at 7:00pm

4-H Junior Leaders
August 29 at 6:00pm

Fair Ground Set Up and Clean Up

Wednesday, July 20 at 6:00pm/ Saturday, July 30 at 10:00am



Kitchen and Food Stand - Sunflower
4-H Building Exhibit Area - Big Creek
Hog Barns/Wash Rack - Fossil Creek
Rabbit/Poultry Barn - Wolf Creek Valley
Cattle Barns - Lonestar

Generals Grounds-ALL families after your specific area is complete

2022 FOOD STAND SHIFT ASSIGNMENTS

SHIFT: TUESDAY 9:00am-4:15pm

SHIFT LEADER: Brandi Reinhardt

CASH REGISTER: Stacey Meitler

*****OPEN-FACED ROAST BEEF SANDWICH DAY*****

NAME	CLUB
Deines	SF
Miller	SF
Meitler	WCV
Becker	SF
Reinhardt	BC
Dinkel	BC

SHIFT: TUESDAY 4:00pm-11:00pm

SHIFT LEADER: Stephanie Dickerson

CASH REGISTER: Jill Lawson

NAME	CLUB
Lawson	WCV
Maske	SF
Karst	LS
Rose	WCV
Haddock	BC
Dickerson	LS
Obermeier	LS
T. Batt	FC

SHIFT: WEDNESDAY 9:00am-4:15pm

SHIFT LEADER: Judy Robbins

CASH REGISTER: Jenna Dempewolf

*****CHICKEN NOODLE DAY*****

NAME	CLUB
Dempewolf	BC
Robbins	BC
Smith	LS
Raymer	SF
Bland	WCV
Gier	BC
Kasparie	FC

SHIFT: WEDNESDAY 4:00pm-11:00pm

SHIFT LEADER: Deanna Myers

CASH REGISTER: Stacie Dumler

NAME	CLUB
Myers	LS
Dumler	LS
Homeier	LS
S. Homeier	LS
Radke	LS
Cline	WCV
Revell	BC

SHIFT: THURSDAY 9:00am-4:15pm

SHIFT LEADER: Beth Pfeifer

CASH REGISTER: Tiffanie Mai

*****CHICKEN FRIED STEAK DAY*****

NAME	CLUB
Pfeifer	FC
Lumpkins	FC
Perti	WCV
Strobel	BC
Reeves	BC
Suchy	BC
Stoughton	BC
Hopper	BC

SHIFT: THURSDAY 4:00pm-11:00pm

SHIFT LEADER: Brooke Olson

CASH REGISTER: Bev Nichols

NAME	CLUB
Nichols	LS
Cook	SF
Prendergast	SF
Eck	SF
Olson	SF
S. Batt	FC

SHIFT: FRIDAY 9:00am-4:15pm

SHIFT LEADER: Chrissy Mullender

CASH REGISTER: Kelsie Zeigler

*****BIEROCK DAY*****

NAME	CLUB
Zeigler	WCV
Mullender	WCV
Blundon	BC
Marsell	SF
Neidenthal	LS
Buehler	LS
Rupp	WCV



Bring at least
3 homemade
pies or
cheesecakes
(not cakes)
per family
when you
report to
work!



Russell Report

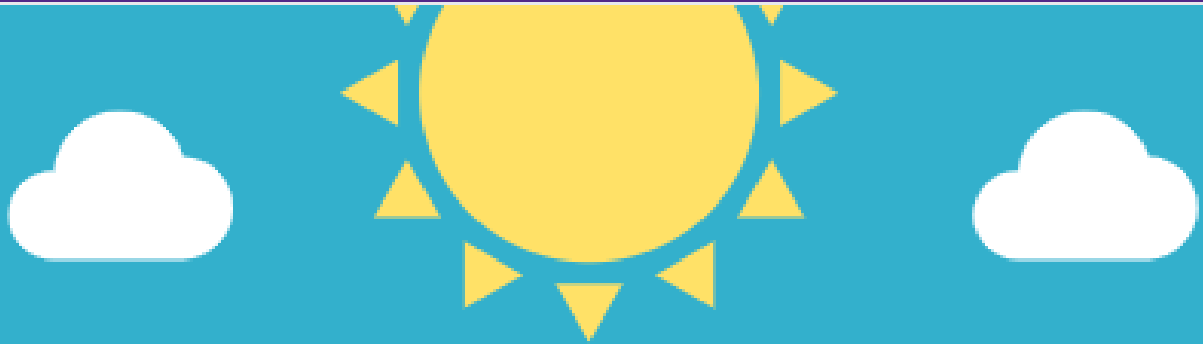


2022 RUSSELL COUNTY FREE FAIR SCHEDULE

Date	Event	Location
SUNDAY, July 17		
12:00pm	RS 4-H Style Revue & Construction Judging	Lucas Community Theater
3:30pm	RS 4-H Public Style Revue	Lucas Community Theater
WEDNESDAY, July 20		
8:30am	RS 4-H Dog Show	4-H Building
	RS 4-H Pet Show following Dog Show	4-H Building
5:30pm	RS 4-H Food Stand Shift Leader Meeting	Kitchen
6:00pm	RS Fairground Clean Up	Done by Clubs
FRIDAY, July 22		
9:00am-12 noon	RS 4-H Life Skills, Hort & Photo Judging Contest	North Room
10:00am	RS 4-H Visual Arts Consultation Judging	South Room
SUNDAY, July 24		
8:00am	RS Open Class Horse Show	Outdoor Horse Arena
MONDAY, July 25		
12:00 noon	RS 4-H Foods Consultation Judging	South Room
4:00pm	RS 4-H Bake Sale	4-H Building
6:00pm-8:00pm	RS 4-H & Open Class Entries (exceptions: 4-H Livestock, 4-H & Open Class Floriculture, Horticulture & Open Photography)	4-H Building
6:00pm	RS 4-H Horse Show	Outdoor Horse Arena
6:00pm	RS Open Quilts Judging	4-H Building
TUESDAY, July 26		
8:00am-11:00am	RS 4-H Weigh In All Livestock	Small Animal @ Sheep & Swine Barn
	4-H Rabbit & Poultry Check In	Beef @ Sale Barn
8:30am	RS Open Clothing Judging	4-H Building
9:00am	RS 4-H STEM, Woodworking/Electric Judging	4-H Building
9:00am	RS 4-H Entomology/Geology Judging	4-H Building
9:00am	RS 4-H Photography Judging (consultation optional)	4-H Building
9:00am	RS Open Crafts & Hobbies	4-H Building
9:00am	RS Open Needle/Hook Judging	4-H Building
9:00am	RS Open Fine Arts Judging	4-H Building
9:00am	RS Open Foods Judging	4-H Building
9:00am	RS Open Market Wheat Judging	4-H Building
9:00am	RS 4-H Booths/Posters/Displays/Home Environment Judging	4-H Building
	Presentations Judging (Following Booths, Posters, etc.)	Rec Classroom
10:00am	RS 4-H Clothing/Fiber Arts Judging	4-H Building
1:00pm	4-H Beef Ultrasound	Beef Barn
6:00pm	RS 4-H Goat Show, Sheep Show, Shepard's Lead	Show Arena
WEDNESDAY, July 27		
8:00am-10:00am	RS 4-H & Open Class Horticulture & Floriculture Entries & Open Photography	4-H Building North Room
8:30am	RS 4-H Swine Show	
10:00am	RS 4-H Poultry & Rabbit Judging	Poultry & Rabbit Barn
10:00am	RS Open Class Photography Judging	4-H Building
10:00am	RS Open Horticulture, Floriculture Judging	4-H Building North Room
2:00pm	RS 4-H Bucket Calf Records Due	North Room Office
5:30pm	Open Class Bucket Calf Show	Show Arena
6:30pm	RS 4-H Bucket Calf Show / Dairy Cattle Show / Beef Show	Show Arena
THURSDAY, July 28		
10:00am	RS 4-H Livestock Judging Contest	Show Arena / Swine Arena
FRIDAY, July 29		
10:00am	RS Round Robin	Show Arena / Horse Arena
1:00pm	Non Livestock Sale animals can leave the barn	Barns
5:30pm	Presentation of Awards	Show Arena
6:00pm	RS Livestock Sale	Show Arena
SATURDAY, July 30		
8:30am	RS Appreciation Breakfast	South Room
9:30am-10:00am	RS Release of Exhibits	
10:00am	RS Fairgrounds Clean Up	by Clubs
	Pizza/Pool Party (following clean up)	Provided by Council



Russell Report



Everyone is invited to attend!

AFTER FAIR POOL PARTY

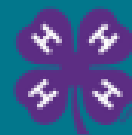
Swimming, Pizza, and fun coming your way!

JULY 30, 2022 • IMMEDIATELY FOLLOWING CLEAN UP

Pizza at the Russell Co Veteran's Memorial off of HWY 40
Swimming at the Russell County Pool

Sponsored by Russell County 4-H Council

K-STATE
Research and Extension



Midway
District

K-State Research and Extension is committed to making its services, activities and programs accessible to all participants. Reasonable accommodations for persons with disabilities may be requested by contacting Marcia Gier at mgierrager@ksu.edu or 785-483-3152. Notify staff of accommodation needs as early as possible.



Ellsworth Events



2022 EW County 4-H Council Officers

President
Rebekah Vague

Vice President
Trenton Hays

Secretary
Brelyn Zier

Treasurer
Sam Thielen

Reporter
Abby Dlabal

4-H Council Meeting
August 29 at 6:30pm

Be prepared for these meetings
with officer and committee
reports!

Fair Association Meeting
July 5 at 6:30pm

4-H Junior Leaders
TBD

Fair Set Up/Clean Up

Everyone needs to plan to help!

Set-Up

Sunday, July 17 at 6:30pm

Clean-up

Sunday, July 24 at 4:00pm

Lots of hands make the work go quickly!

Ellsworth County Fair Association Approves Silent Auction for 2022 Fair!

The ECFA made a great new change to the 2022 Ellsworth County Fair this year! For any member who will not be selling an animal in the Livestock Premium Auction, you are eligible for selling one item, or basket of items, in the Silent Auction. All items must be something judged in the fair, but food and produce must be fresh picked or baked. This is a terminal auction, so the item will be going to the highest bidder, but members can also put a minimum starting bid. See the fair book for all the details. Sign up is due by Wednesday, July 20 at noon. As you sign up for your fair entries, keep the Silent Auction in mind!

Fair Entry

Entries for the fair are due on July 10th through FairEntry!

Don't forget to enter showmanship by going to 4-H Showmanship and then going to your species to enter. Also, to enter fashion revue, go to the events section! It's important to have these entries done by the deadline to avoid late fees.

Late fees are as follows:

July 11 - July 15: \$10

July 16 - Day of the event: \$25

It is also important to print a complete list of your families entries once they are entered.

<http://ellsworthcofair.fairentry.com>



Ellsworth Events

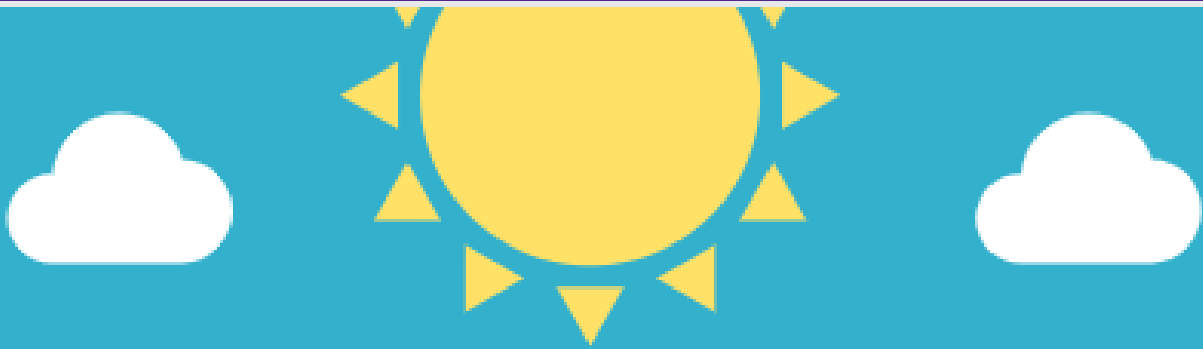


2022 ELLSWORTH COUNTY FAIR SCHEDULE

Date	Event	Location
SATURDAY, July 16		
8:30am	4-H Dog Show	Armory
10:00am	4-H Pet Show	Armory
6:00pm	4-H Horse Show	Horse Arena
SUNDAY, July 17		
2:00pm	Fashion Revue Judging	First Presbyterian Church
5:00pm	Public Fashion Revue	First Presbyterian Church
6:30pm	Barn/ Armory Clean Up & Set Up	Livestock Barn/Armory
MONDAY, July 18		
9:00am	4-H Visual Arts Judging	Armory
	4-H Photography Judging	Armory
	4-H Life Skills Judging Contest	Armory
1:00pm	Open Class Set Up - All Committees Assist	Armory
6:00pm	4-H Livestock may be brought into barns	Livestock Barn
6:00pm-8:00pm	Sheep, Meat Goat & Dairy Goat Check-in & Weigh-in	Livestock Barn
6:30pm	Poultry Testing	Animal Tent
7:00pm-9:00pm	Open Class Exhibits Check-in	Armory
TUESDAY, July 19		
8:00am	4-H Superintendents Check-in Exhibits - All Divisions	Armory
8:00am-9:30am	Swine & Beef Weigh-in & Check-in	Livestock Barn
	Open Class Exhibits Check-in	Armory
9:00am	4-H Foods Judging	Armory
9:30am	All 4-H Exhibits to be in place	Armory and Barns
10:00am	4-H Entomology & Foods Exhibits can be brought in at time of consultation judging	
	Open Class Judging	Armory
	4-H Plant Science Judging	Armory
11:00am	4-H Food Preservation Judging	Armory
12:00pm	4-H Fiber Arts/Clothing Construction Judging	Armory
1:00pm	4-H Woodworking, Forestry, Electric, Entomology, Notebooks, Project Exhibits, Home Environment, Banners, Geology, Architectural Block Construction, and Rocket Judging	Armory
1:30pm	4-H Rabbit Show	Animal Tent
2:00pm	4-H/Open Class Ag Mechanics Judging	Armory
2:30pm	4-H Poultry Show	Animal Tent
3:00pm-9:00pm	4-H/ Open Class Exhibits on Display	Armory
4:00pm	Dairy Goat Show	Livestock Barn Show Arena
5:00pm	4-H Food Sale	Armory
5:30pm	4-H Sheep, Goats & Shepherd's Lead	Livestock Barn Show Arena
Conclusion	4-H Rocket Launch	Baseball Diamond
WEDNESDAY, July 20		
8:00am	4-H Swine Show	Livestock Barn Show Arena
8:00am-9:00pm	4-H/ Open Class Exhibits on Display	Armory
12:00pm	Silent Auction Intent to Sell Forms due	Fair Office
5:00pm	4-H Beef Show	Livestock Barn Show Arena
10:00pm	4-H Premium Auction Information Due	Armory
11:00pm	Barn Curfew	Livestock Barn
THURSDAY, July 21		
8:00am-7:00pm	4-H/ Open Class Exhibits on Display	Armory
9:00am	Open Class Tag Along Show (Goat, Sheep, Swine, Bucket Galf)	Livestock Barn
10:00am	4-H Bucket Galf Show	Livestock Barn
12:00pm-7:00pm	4-H Silent Auction	Armory
1:00pm	4-H Livestock Judging Contest	Livestock Barn
5:00pm	Community BBQ	
5:15pm	4-H Round Robin	Livestock Barn
7:00pm	4-H Parade of Champions	Livestock Barn
	Release of 4-H / Open Class Exhibits from Armory	Livestock Barn
8:00pm	4-H Premium Auction	Livestock Barn Show Arena
	Open Class Clean Up	Armory
SUNDAY, July 24		
4:00pm	4-H Clean Up Fairgrounds	



Ellsworth Events



Everyone is invited to attend!

AFTER FAIR POOL PARTY

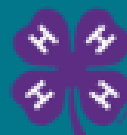
Swimming, Pizza, and fun coming your way!

JULY 24, 2022 • 6:00 PM

ELLSWORTH CITY POOL

Sponsored by Ellsworth County 4-H Council

K-STATE
Research and Extension



Midway
District

K-State Research and Extension is committed to making its services, activities and programs accessible to all participants. Reasonable accommodations for persons with disabilities may be requested by contacting Marcia Gier at marciagier@ksu.edu or 785-483-3157. Notify staff of accommodation needs as early as possible.



4-H in the News



Rock Springs Ranch 4-H Camp



Learning Center



LEADERS.... DID YOU...

REVIEW

- 4-H Update Important Dates/Deadlines (Calendar)

TO DO

- Check mailbox at the Extension Office
- Report from 4-H Council Meetings
- Provide any leadership changes to the Extension Office ASAP
- Update Volunteer Renewal information

PROMOTE/RECRUIT

- 4-H members: ask a friend to attend meetings
- Encourage current 4-H members to review and complete applications for KYLF, Citizenship in Action, Citizenship Washington Focus
- Remind all 4-H members and parents who are volunteers to enroll via 4-H Online
- The Extension Office has a copy of the Cloverbud handbook for each club- please provide this resource to your club Cloverbuds
- Provide officers and clubs leadership updates as soon as possible to the Extension Office



Kansas State Fair Entries



Are you 9 {in 4-H age} and received a purple ribbon at the County Fair or District Club Days? If so, you may be eligible to exhibit at the Kansas State Fair!

The deadline to have entry forms to the Midway District offices is Friday, August 5.

The entry forms and all other state fair related exhibitor details can be found [HERE](#).

[2022 Kansas State Fair 4-H and FFA Exhibitor Handbook](#)

Possible Questions from a Judge

As you prepare your projects for the fair, keep these questions in mind. The more you practice answering questions about your projects, the better prepared you will be on fair day!

Possible questions from a Judge:

- How did you improve your skills?
- Did you enjoy working on this project?
Why?
- What was the easiest...(or most difficult)?
- Where did you learn how to... ?
- Why did you choose this?
- Next time, you may want to consider...
- Who gave you help with the project?
- I noticed you... (or) I could see you felt....
- How does this exhibit fit into your project?
- What were your goals for this project?
- You really did a good job!
- What would you like to do next year?
- You should feel proud because...
- It would be helpful if...
- Tell me more about...



4-H Happenings



Kansas 4-H Wheat Expo

Kansas 4-H Wheat Expo will be held Thursday, August 4 in St. John at the Stafford County Annex Building. This event will include tours of the Stafford County Flour Mill and tours of local vegetable operations who market to area grocers and larger farmers markets. The contest component includes divisions in crops- 1- lb. bin run, 1-quart jar sample of cleaned wheat; foods- yeast rolls, cookies, muffins; photography- wheat photos; wheat educational posters and Cloverbuds. Ribbons and cash prizes will be awarded. All exhibitors must be present to qualify for prizes.

Register [HERE](#) by July 25. Registration is \$6/person payable at the door.

State 4-H Horticulture Judging Contest

When: Saturday, August 13, 2022

Where: Kansas State University Campus, Manhattan, KS

To register by **Monday, August 1**, contact our office at 785-483-3157.

For more details about this contest, click [HERE](#).

Kansas 4-H Livestock Sweepstakes

When: August 20-21

Where: K-State campus in Manhattan, KS.

The Sweepstakes event includes the state 4-H livestock judging contest, meat judging contest, livestock skillathon, and livestock quiz bowl.

Rules and more details can be found [HERE](#).



Upcoming Events



July 1

LOTS of fair paper work due
(see emails for details)

July 17-22

Ellsworth County Fair

July 23-29

Russell County Fair

August 5

KS State Fair Entry Forms
due to the office

September 9-18

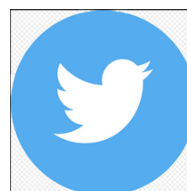
Kansas State Fair

September 21

Project Records/Record
Books Due



www.facebook.com/Midway4H
www.facebook.com/MidwayKSRE



@Midway4H @MidwayKSRE



@ksre_midway

If you would prefer receiving this newsletter via mail (in addition to the email and posted version), call the Extension Office at (785) 483-3157 and we will add you to the mailing list.

Upcoming Events: Be sure to regularly check the Midway District website for upcoming shows and clinics.

www.midway.k-state.edu/events/areashows.html

July 2022

AC-Ash Creek, BC-Big Creek, CL-County Liners, EH-Elkhorn,
FC-Fossil Creek, LS-Lonestar, SF-Sunflower, SS-Shooting Sports,
TT-Trying Tommies, WW-Wilson Winners, WCV-Wolf Creek Valley

Sun	Mon	Tue	Wed	Thu	Fri	Sat
						1 2
3 Independence Day Club Meetings: BC/LS	4 Club Meetings: ECFA Meeting	5	6	7 Extension Board Meeting - RS	8	9
10 Club Meetings: SS / WCV	11 Club Meetings: RS Fairboard	12	13	14	15	16 EW CO FAIR
17 Club Meetings: AC/WW/FC/SF EW Jr. Leaders EW CO FAIR	18 Club Meetings: CL Club Meeting EW CO FAIR	19 EW CO FAIR	20 EW CO FAIR	21 EW CO FAIR	22	23
24 Club Meetings: TT/EH	25 Club Meetings: RS Council RS CO FAIR	26 RS CO FAIR	27 RS CO FAIR	28 RS CO FAIR	29 RS CO FAIR	30
31						

August 2022

AC-Ash Creek, BC-Big Creek, CL-County Liners, EH-Elkhorn,
FC-Fossil Creek, LS-Lonestar, SF-Sunflower, SS-Shooting Sports,
TT-Trying Tommies, WW-Wilson Winners, WCV-Wolf Creek Valley

Sun	Mon	Tue	Wed	Thu	Fri	Sat
	1 Club Meetings: ECFA Meeting	2	3	4	5 KANSAS STATE FAIR ENTRY FORMS DUE TO OFFICE	6
7 Club Meetings: BC/LS	8 Club Meetings: RS Fairboard	9	10	11 Extension Board Meeting - EW	12	13
14 Club Meetings: SS / WCV	15 Club Meetings: CL Club Meeting	16	17	18	19	20
21 Club Meetings: AC/WW/FC/SF EW Jr. Leaders	22 Club Meetings: EW Council RS Jr. Leaders	23	24	25	26	27
28 Club Meetings: EH/TT	29	30	31			

C
A
L
E
N
D
A
R

C
A
L
E
N
D
A
R